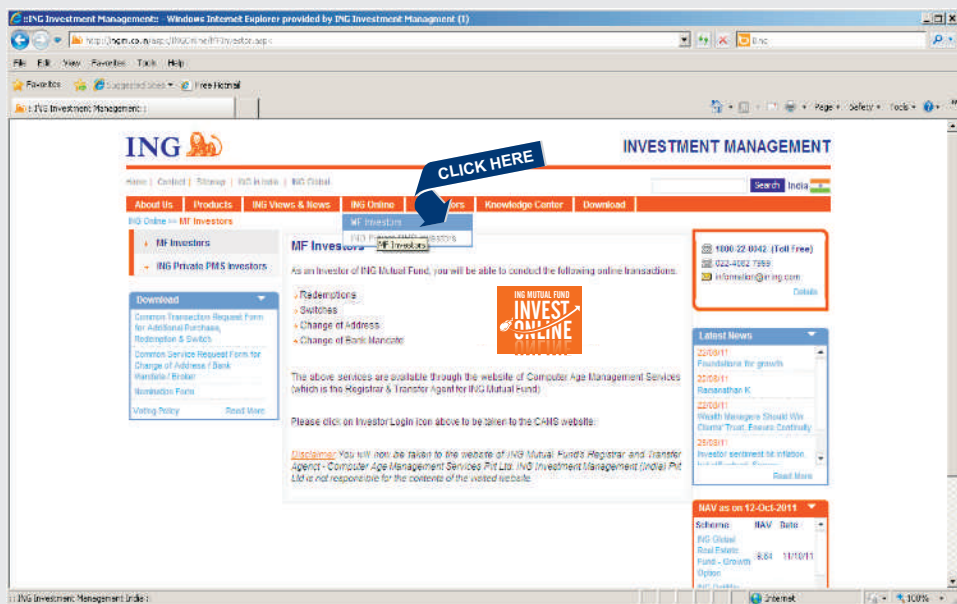
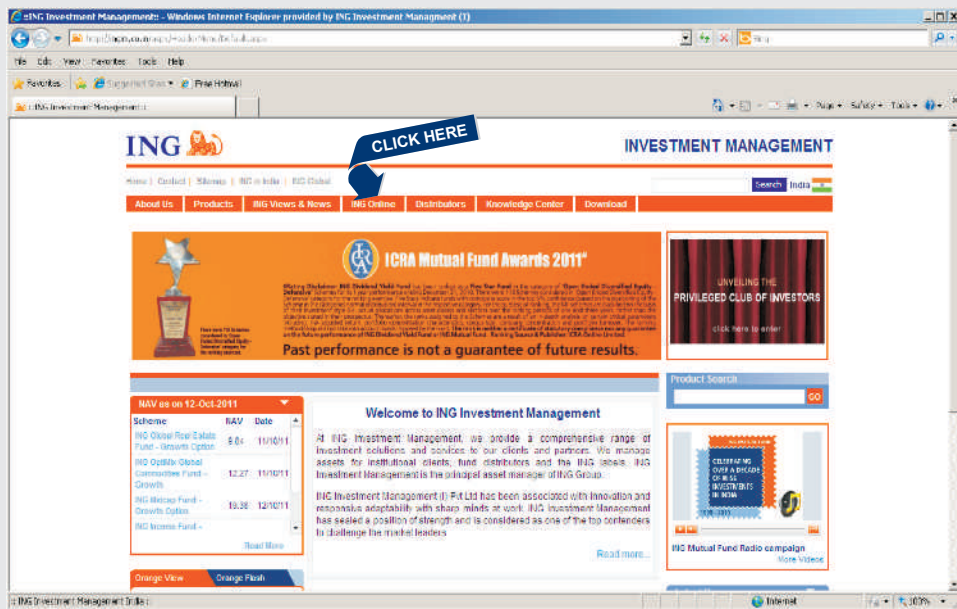


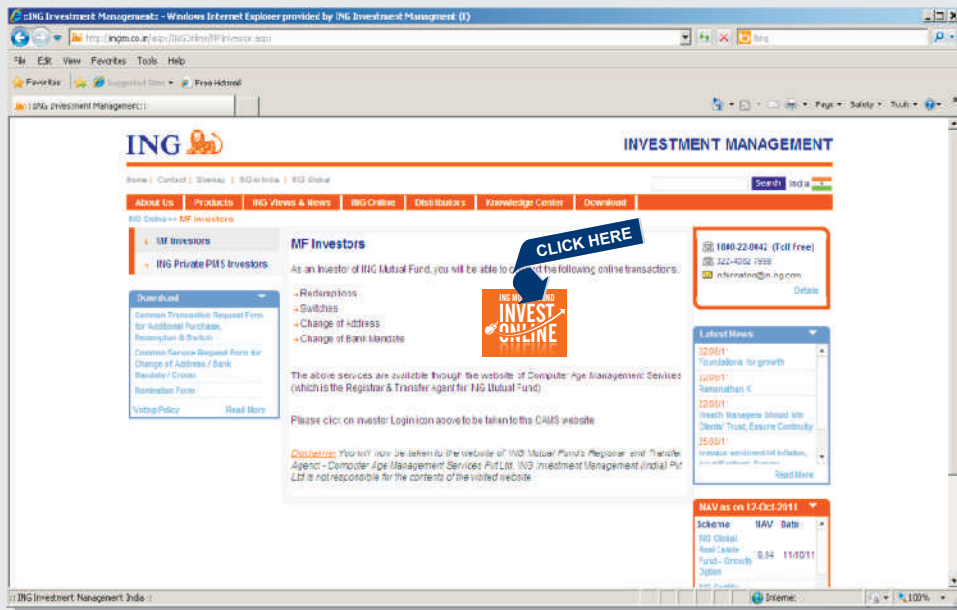
ING MUTUAL FUND INVEST ONLINE

STEPS FOR REGISTRATION & LOGIN

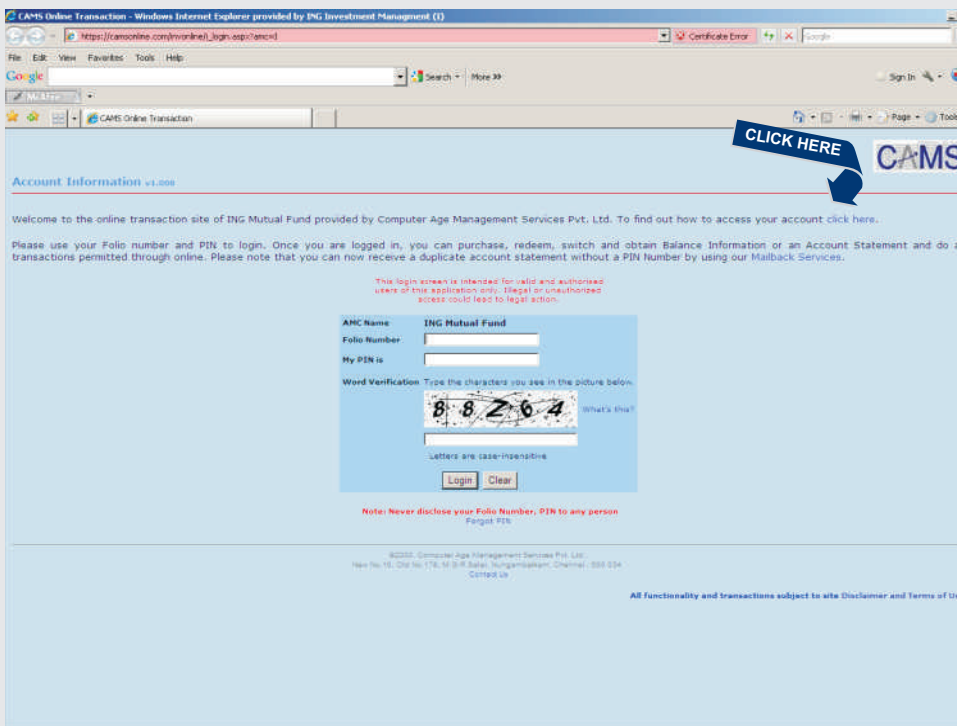
1. Log on to www.ingim.co.in
2. Go to the 'ING Online' menu. In the dropdown menu click on the 'ING MF Investors' option



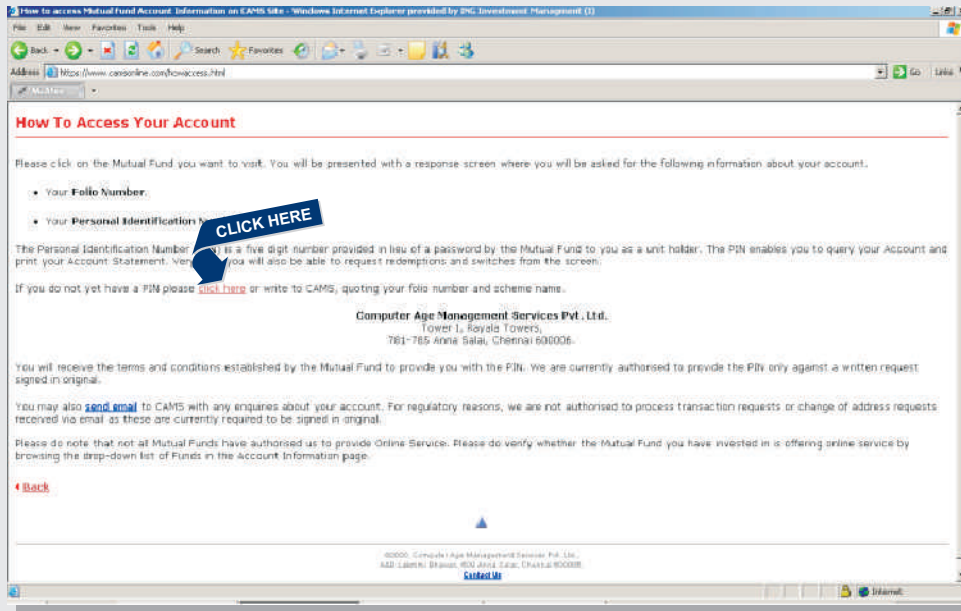
3. Click on the logo unit 'ING Mutual Fund Invest Online'



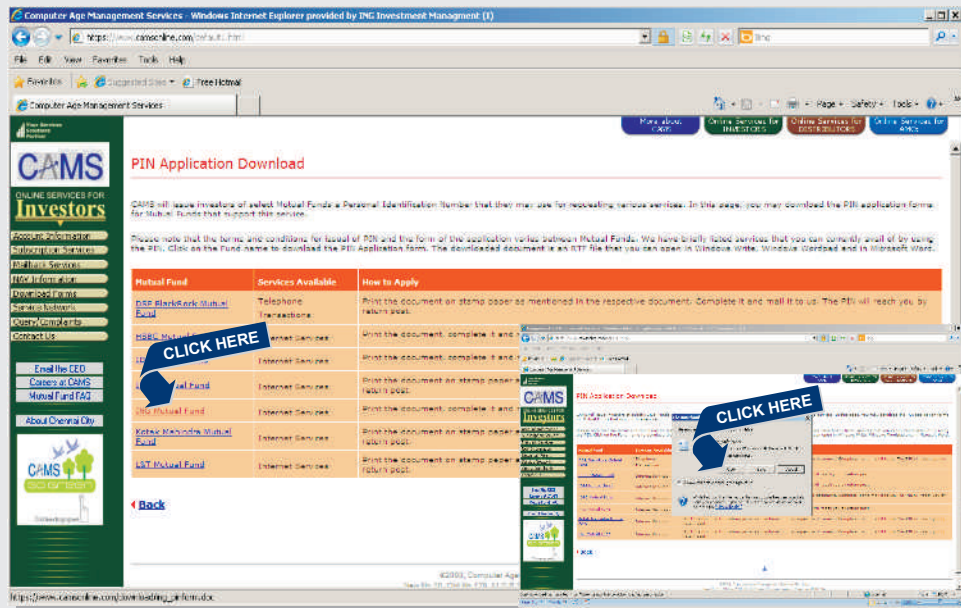
4. You will be re-directed to CAMS online website. To access your account you will need your folio number and pin which is a 5-digit number provided in lieu of password. For first time investors who do not have pin, you need to obtain the pin by hitting the 'click here' tab.



5. You can write to CAMS on the given address quoting your folio number & scheme name. For issuing the PIN, a PIN agreement also needs to be signed and despatched to CAMS.

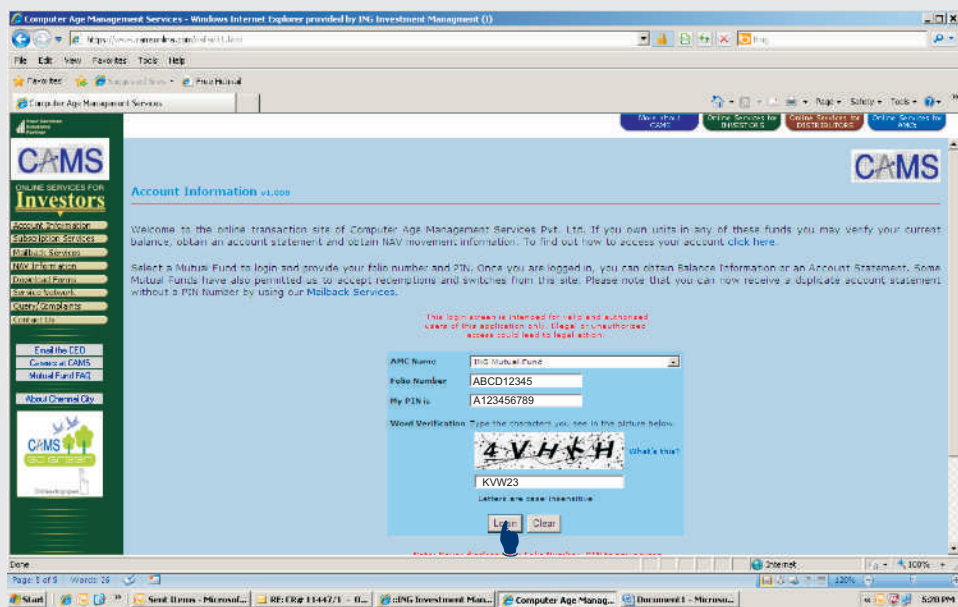
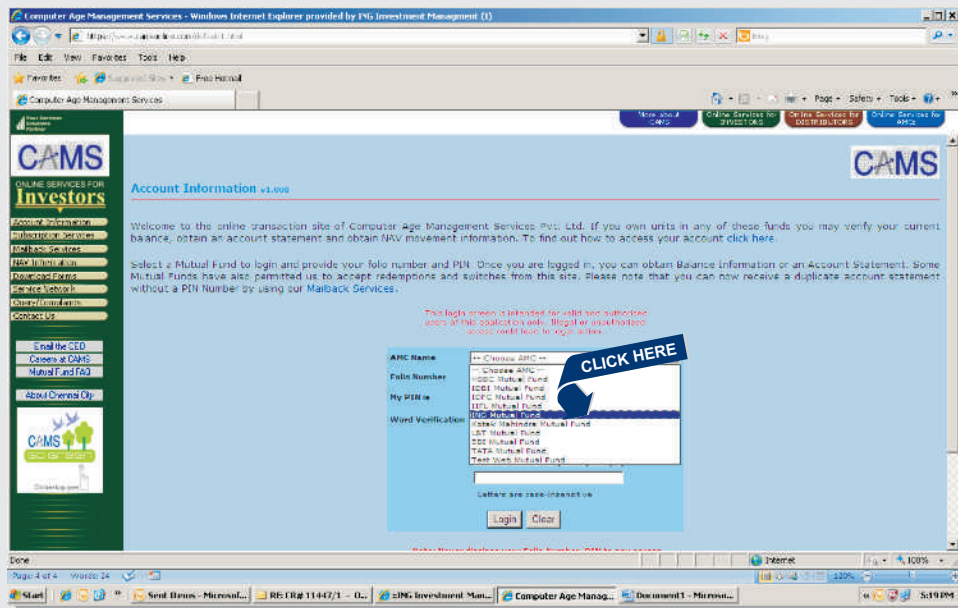


6. You can download the PIN Agreement by clicking on ING Mutual Fund on 'PIN Application Download' page. Print the document, complete it and mail the same to CAMS. The PIN will reach you by return post.

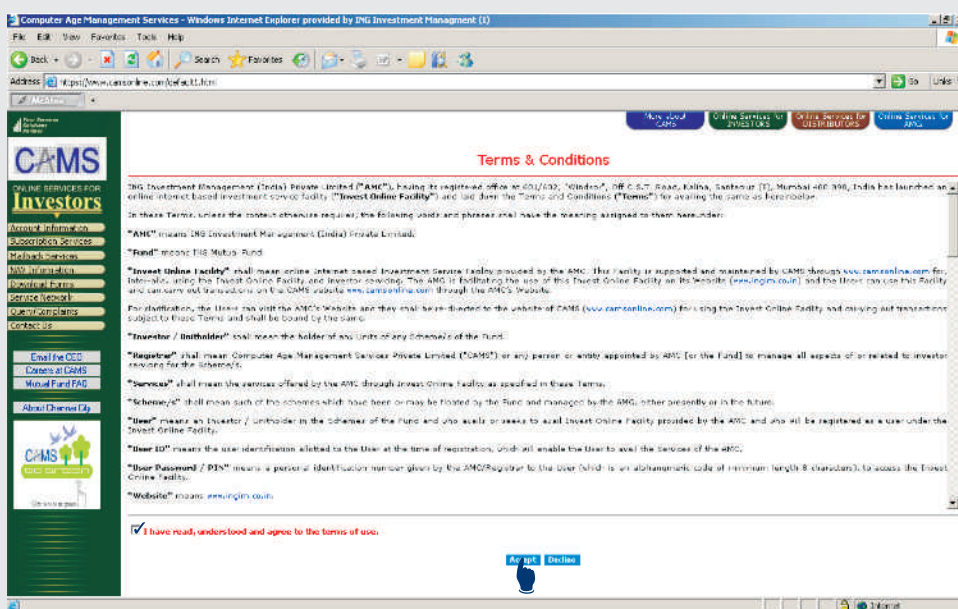


Once you have obtained pin and you wish to access your account for Switch, Additional Purchase or Redemption, you need to repeat steps 1 to 4.

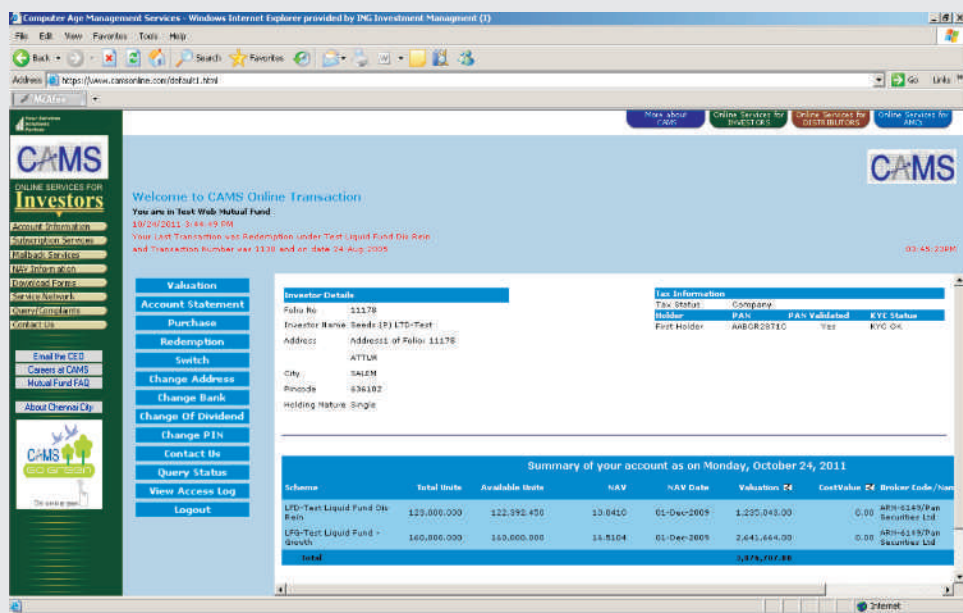
a. Select 'ING Mutual Fund' from the drop down menu & key in your Folio Number, your PIN no & click on Login



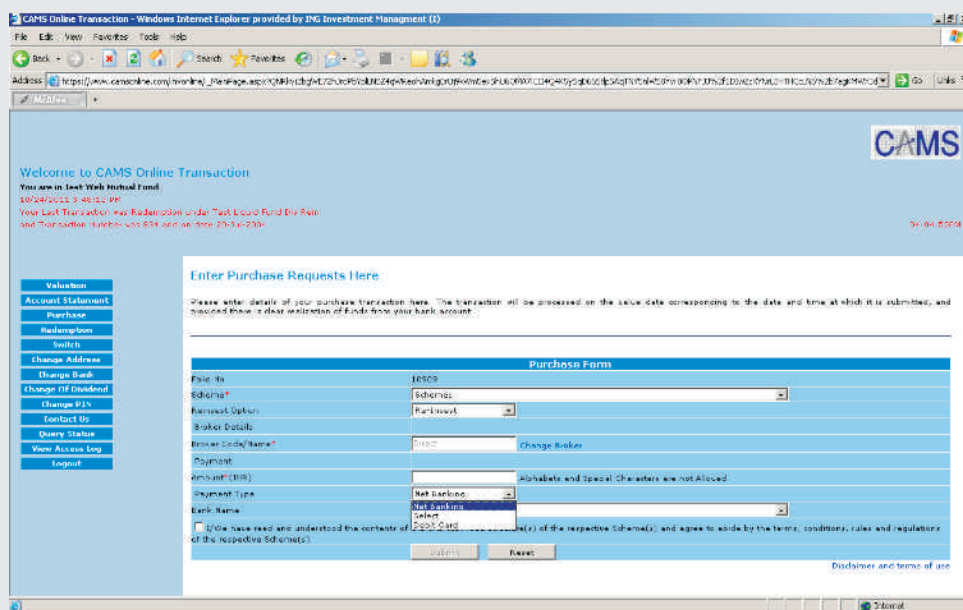
b. You will reach the 'Terms & Conditions' page; after reading it you need to tick on the checkbox and then click on 'Accept' to proceed to the next level



- c. You will be redirected to the page reflecting 'Summary of your Account' i.e. ING schemes invested in, number of units, NAV, valuation, registered bank account, etc., On the left hand side is a menu of options for Purchase, Redemption, Switch. To make additional purchase, you need to click on Purchase & get started.



- d. To execute additional purchase, you need to key in scheme name, option, broker code, amount (INR) for additional purchase along with Payment type i.e. Net Banking or Debit Card.



- e. Depending on your selection (Net Banking or Debit Card) you will be directed to the payment gateway. You need to key in the details of your bank/ debit card and execute the transaction.

Note: For Net Banking, you should ideally select the same bank as per your bank mandate mentioned during initial purchase.